



SUNNYWAY

SWE027

PN: SW19073EB56



Sunnyway Technology

Add: Building 65-302, No.421 Hongcao Road, Xuhui District, Shanghai
Tel: +86-021-6484 2326 Fax: +86-021-6484 2328
Email: sales@sunny-way.com Web: www.sunny-way.com

1. Electrical Specifications

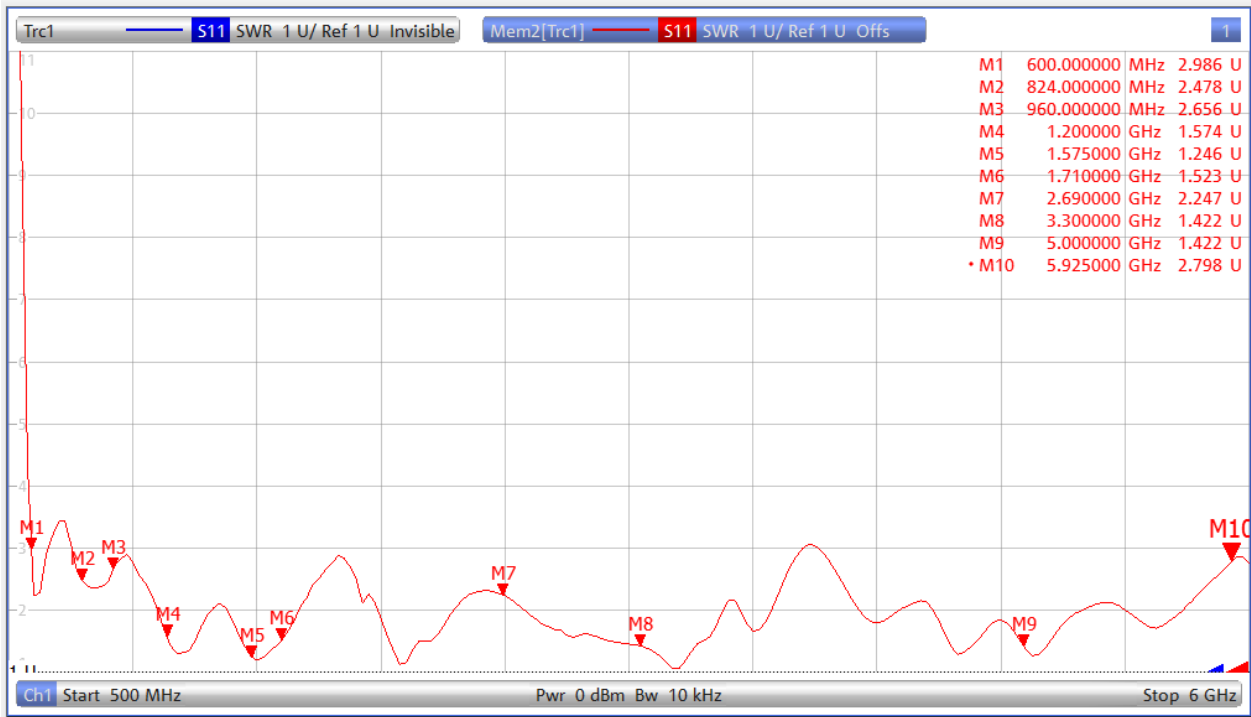
Standards	5G/4G/3G/2G
Frequency range (MHz)	600~6000MHz
Peak Gain (dBi)	-2.0~5.5dBi
Average Gain (dB)	-6.0~-0.7dB
VSWR	< 3.5
Return Loss	< -5.0
Efficiency (%)	25~85%
Polarization mode	Linear
Radiation pattern	Omni-Directional
Output impedance (Ω)	50
Max. Input Power(W)	25

2. Mechanical and Environmental Specification

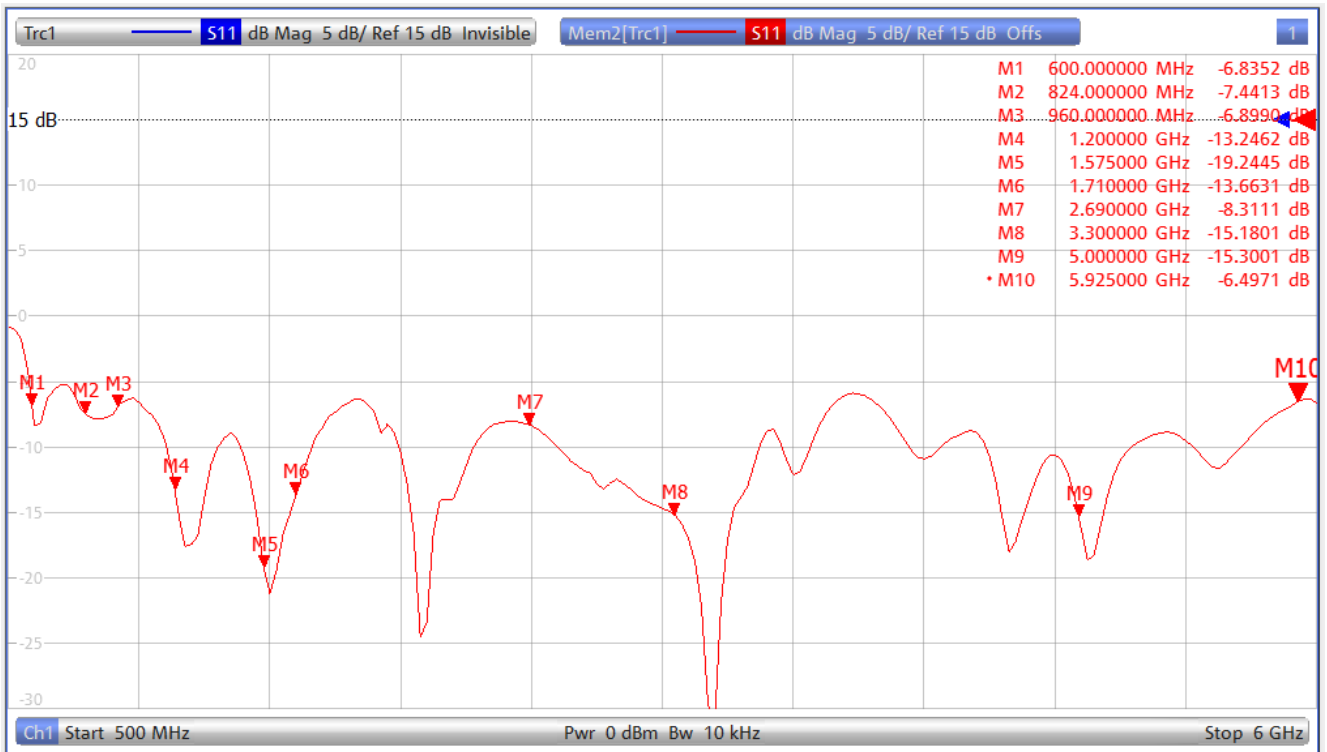
Mounting Type	Connector Mount
Connector Type	SMA (M)
Antenna size(mm)	152.4 x 21.79 x 14.49
Material	ABS
Operating Temperature (°C)	- 40 °C ~ + 85 °C
Storage Temperature(°C)	- 40 °C ~ + 85 °C

3. Antenna parameters

FRE (MHz)	600	824	960	1200	1575	1710	2690	3300	5000	5925
VSWR	2.9	2.4	2.6	1.5	1.2	1.5	2.2	1.4	1.4	2.7
Return Loss	-6.8	-7.4	-6.8	-13.2	-19.2	-13.6	-8.3	-15.1	-15.3	-6.4
Eff (%)	49.9	42.8	62.9	36.2	75.4	67.8	50.8	47.6	52.6	44.4
PEAK Gain (dBi)	0.63	1.58	2.65	-0.75	1.87	1.25	0.99	1.44	1.88	3.02

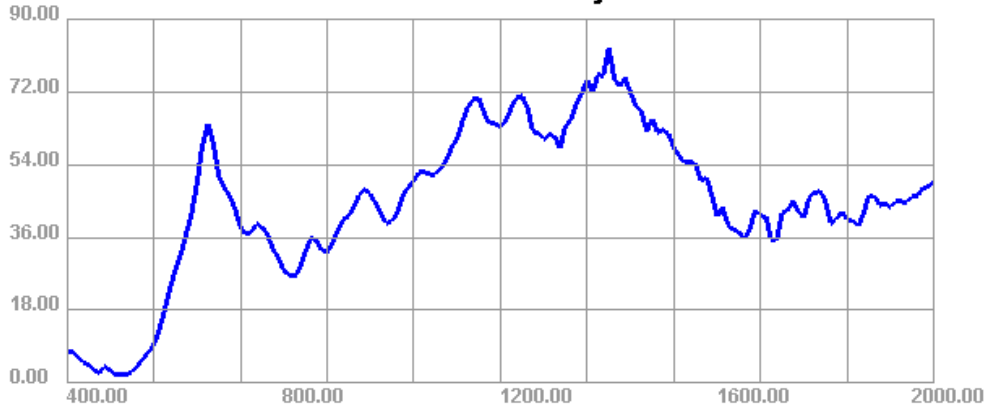


VSWR

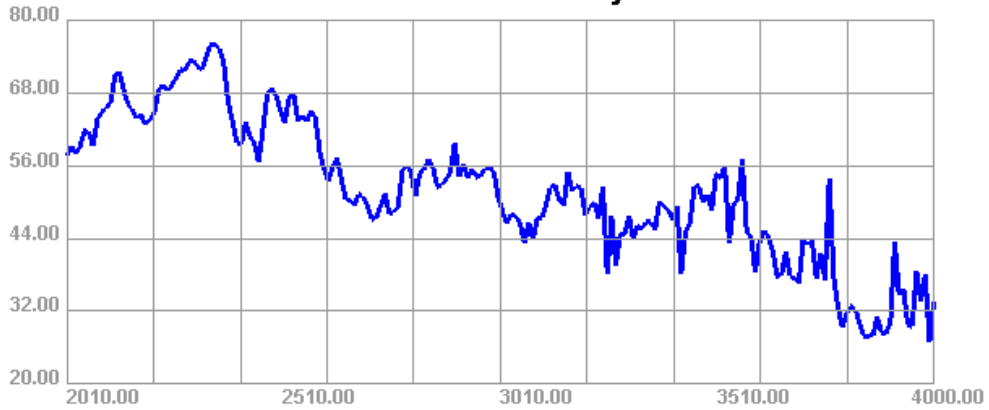


Return Loss

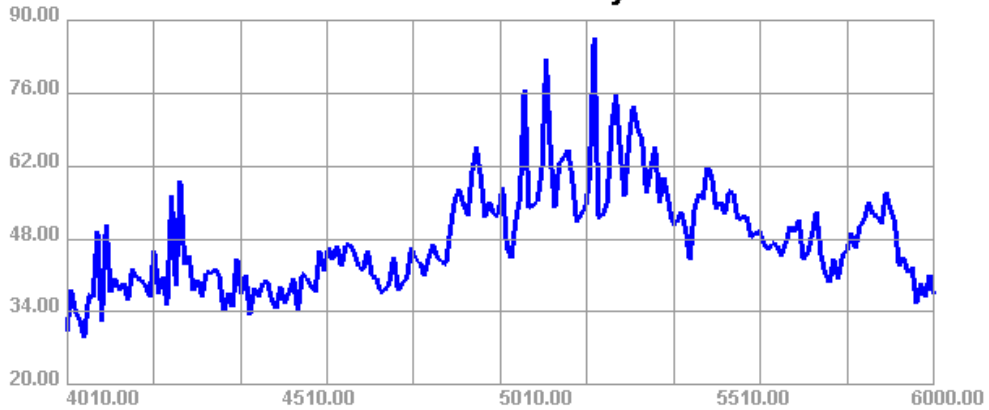
400.00MHz - 2000.00MHz Efficiency



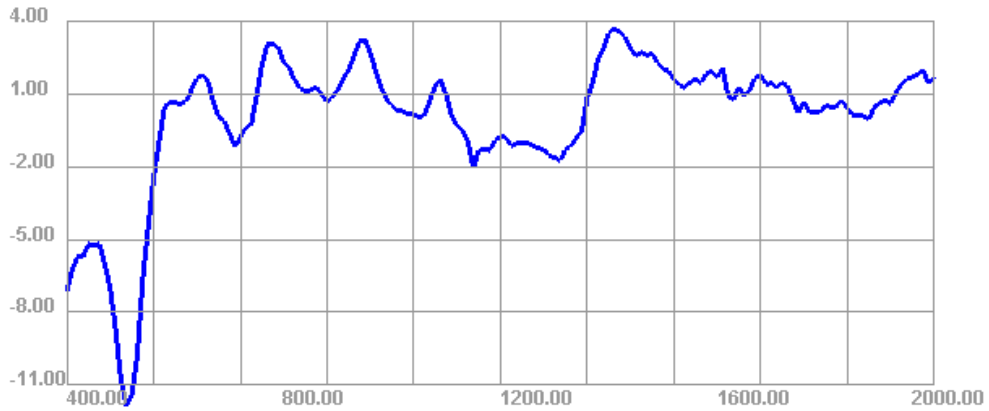
2010.00MHz - 4000.00MHz Efficiency



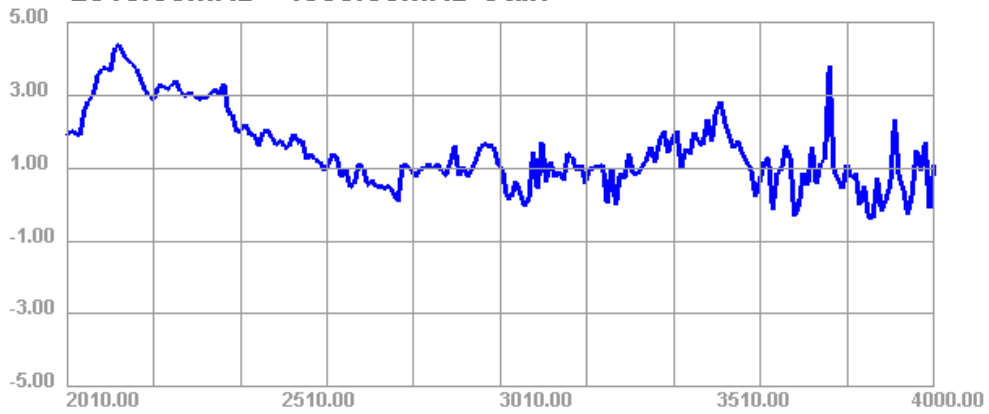
4010.00MHz - 6000.00MHz Efficiency



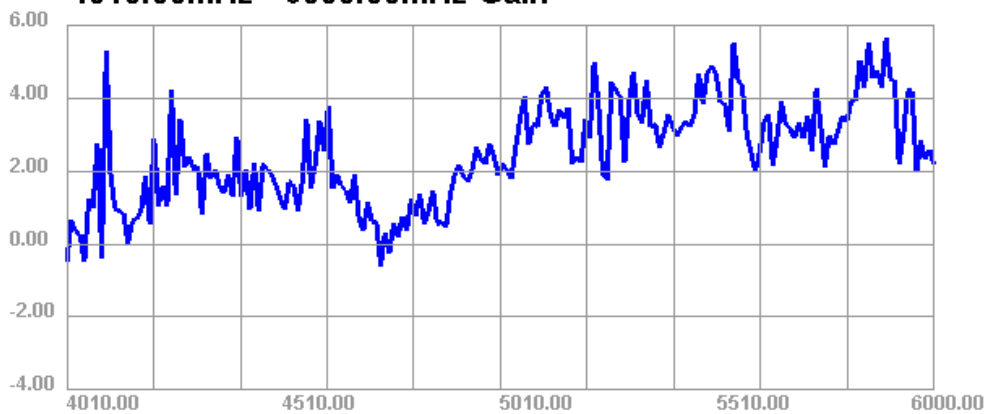
400.00MHz - 2000.00MHz Gain



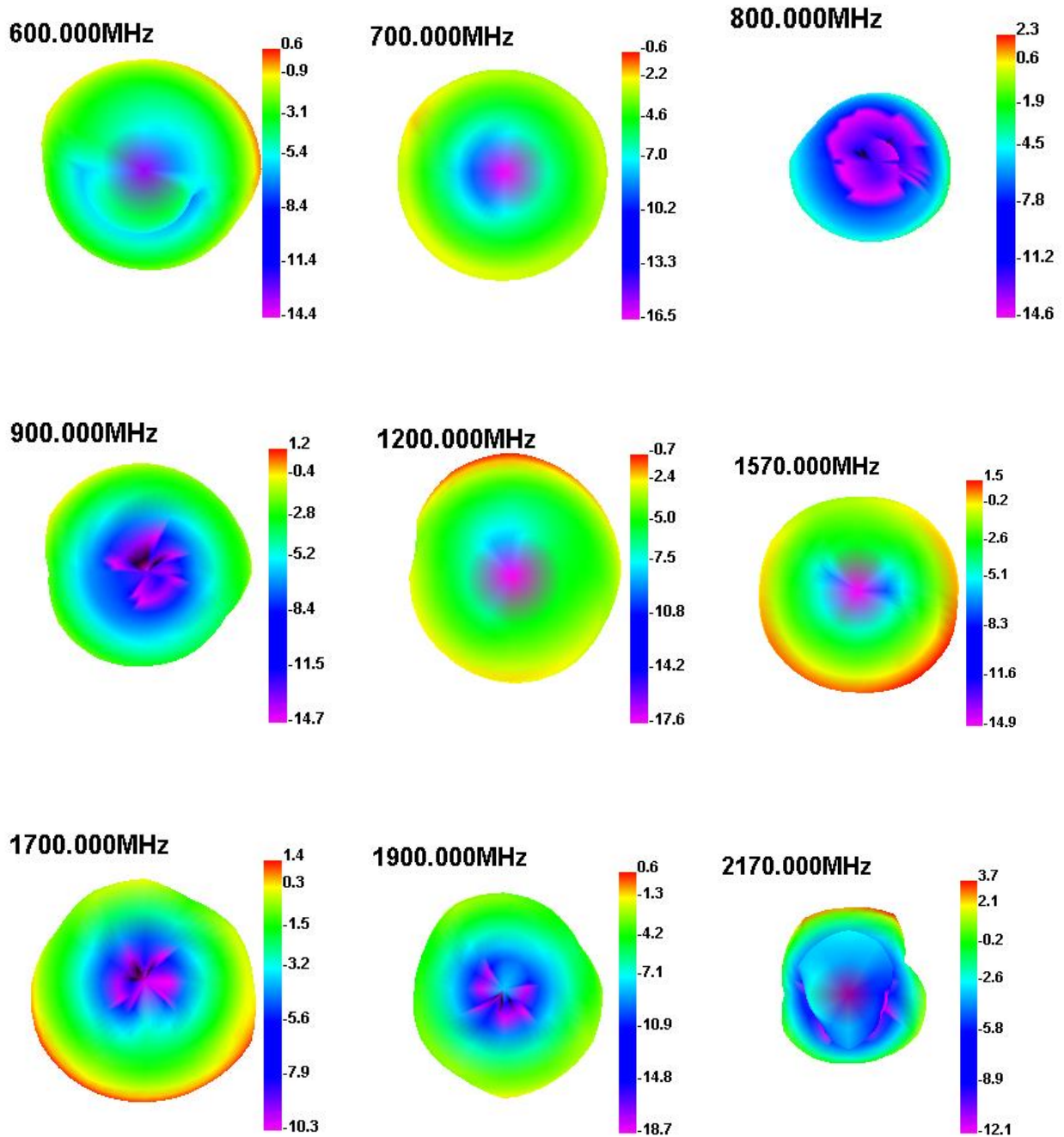
2010.00MHz - 4000.00MHz Gain



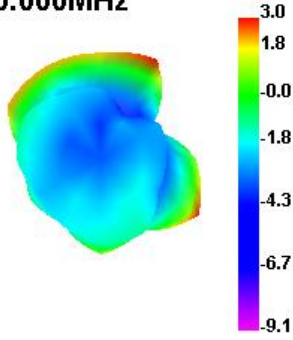
4010.00MHz - 6000.00MHz Gain



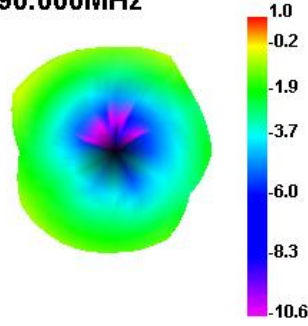
Directional pattern



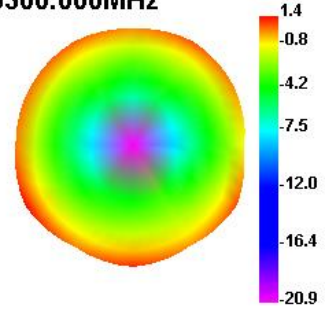
2300.000MHz



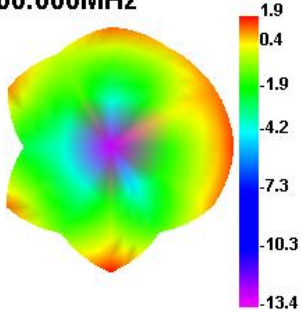
2690.000MHz



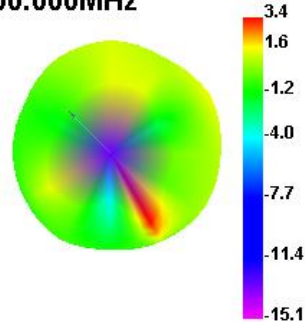
3300.000MHz



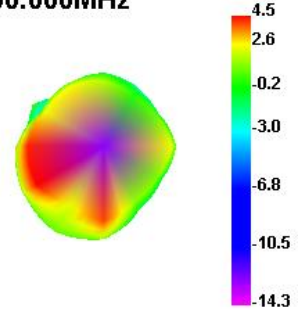
5000.000MHz



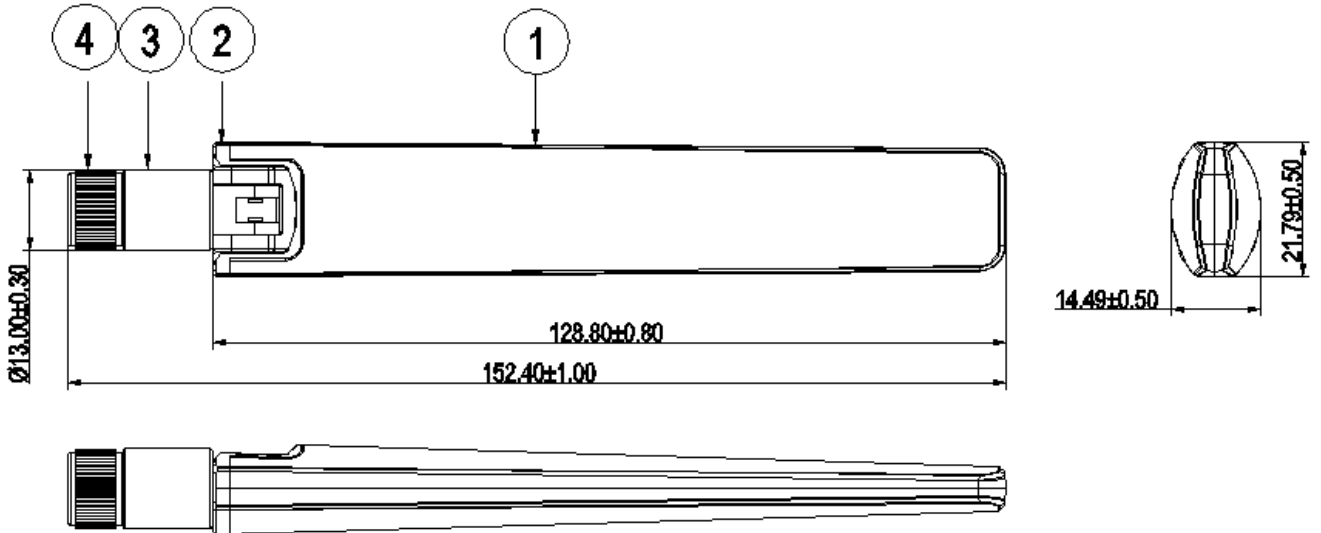
5200.000MHz



5900.000MHz



4. Antenna Drawings



4	SMA	SMA-J	black	1
3	Lower Firmware	ABS	black	1
2	Upper firmware	ABS	black	1
1	nomenclon	ABS	black	1
Series	Component name	Specification	Color	Quantity